

# RIGID WALLS

---

Triad Flooring

## RIGID THERMAL CONTAINMENT

---

01

**APPLICATIONS:** Thermal containment isolates hot and cold air, helps eliminate hot spots, and ensures only the hottest air is returned to the CRAC unit. This facilitates lower set points, helps prevent down time, and can lengthen the life of IT equipment.

- Use above cabinet rigid walls for hot aisle containment. They enclose the space between cabinets and the ceiling and can be mounted to the top of the cabinet or suspended from the ceiling.
- Floor mount rigid walls are leveraged in both hot and cold aisle containment as full walls and to fill the gaps between cabinets or between cabinets and walls.”
- Expandable rigid walls slide to fit variable width gaps. They’re ideal for data centers with ever evolving layouts.

02

**KEY FEATURES:**

- Custom made to fit any gap
- Built with anodized aluminum framing and clear plexiglass paneling
- Precisely measured and manufactured for tight fit and tolerances

03

### WHAT SETS RLE'S RIGID THERMAL CONTAINMENT APART?

- **Custom Made For Your Facility** - Every facility is unique and so is each containment project. Each of our containment solutions is custom manufactured, ensuring a tight fit and tolerances for your specific application.
- **Quality Construction** - Made with sturdy aluminum framing, you can choose from several different paneling styles, and we even offer customized anodized and powder coat finishes to coordinate with the aesthetics of any facility.

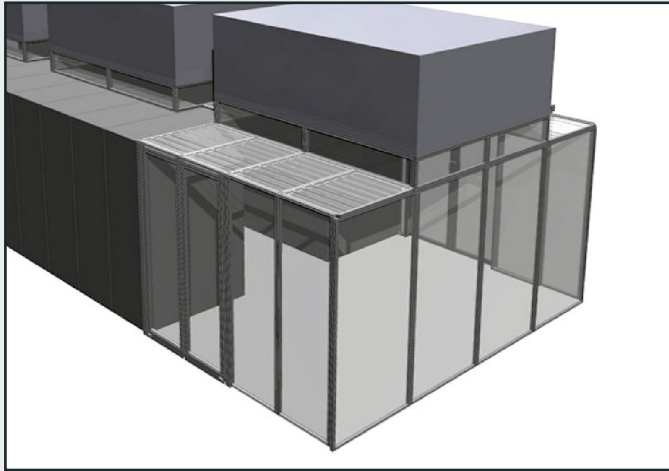
**04 RIGID WALLS COMPLETE A POLISHED CONTAINMENT SOLUTION:** Rigid containment is the most effective way to isolate hot and cold air in any facility and gives your space a clean, finished, professional look.



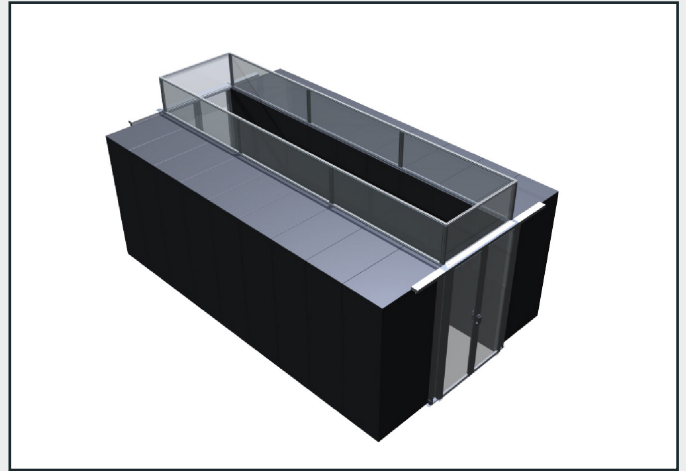
**05 RIGID THERMAL CONTAINMENT:** Custom solutions for hot and cold aisle containment.

Technical Specifications	
<b>Door Frame</b> Material Tensile Strength Finish Optional Upgrade	6560 T-6 temper aluminum 30,000 psi Clear satin anodize Custom anodize and powder coat colors
<b>Door Frame</b> Material Tensile Strength Finish Optional Upgrade	NOTE: Rigid walls with a width less than 30" will use 3mm polycarbonate. Rigid walls with width exceeding 30" will be upgraded to 4.5mm polycarbonate. 3mm clear polycarbonate; ASTM E-84 Class B; ASTM D635 CC1; ASTM D2843 < 75 4.5mm premium clear polycarbonate; 650°F self-ignition rating; UL 94 V-0; ASTM D635 CC1; ASTM D2843 Passed Clear PVC; FM 4910 Passed; UL 94 V-0; ASTM E-84 Class A 6mm twin-wall polycarbonate; ASTM E-84 Class A; ASTM D635 CC1

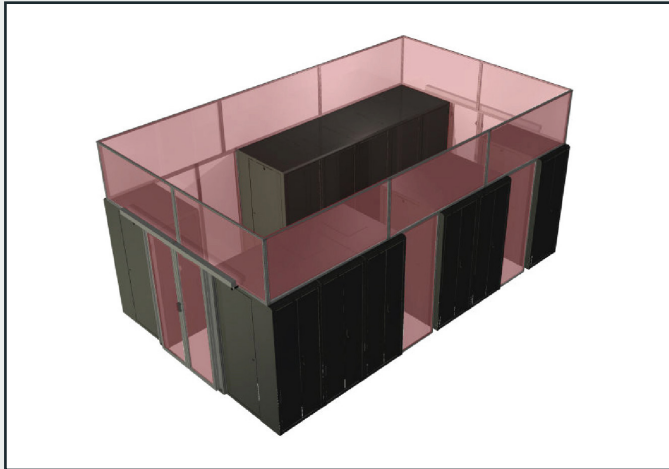
05



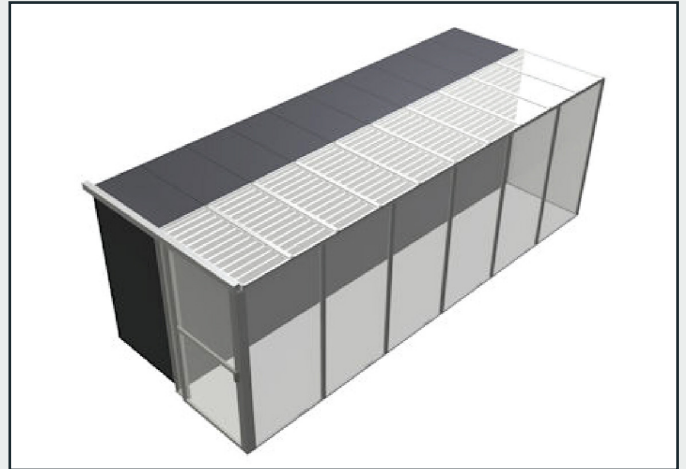
Pod with Rigid Containment



Hot Aisle with Rigid Containment



Hot Aisle with Rigid Containment



Cold Aisle with Rigid Containment