



Panel Replacement Checklist

Ensuring A Seamless Transition To Triad

Monitor. Integrate. Alert. Peace of Mind.

Airflow Panels

Our chamfer and slotted panels both include patented stratification fins that direct chilled air exactly where it needs to be. Fits into almost any style and age of raised floor.

Solid Floor Panels

Solid floor panels are available in a variety of materials and finishes to suit the needs of your facility.

Great buildings start with great designs and when it comes to flooring and airflow, our specialists have seen - and spec'd - it all. From raised floors to blanking panels, from airflow-blocking grommets to stringers and underfloor plenum panels, our portfolio allows us to work within the specific parameters of your facility to create a solution that suits your requirements.

Why install outdated flooring panels when you can choose a solution that works to improve your facility's airflow?

We've compiled this guide to help you start the seamless transition from your outdated raised floor system to a Triad raised floor system.

Identifying Airflow Replacement Panels:

- Confirm Panel Dimensions.
 - » Imperial (24" x 24") or Metric (600mm x 600mm)
- What Load Rating Is Required?
 - » 1,500 lb, 3,000 lb, 4,000 lb, or 5,000 lb
- Is There A Color Requirement?
 - » Standard colors are Grey Flek or Crystal White.
 - » Other colors available for a set-up charge.

Notes:

Identifying Solid Replacement Panels:

- What Is The Thickness Of The Panel?
- What Is The Thickness Of The Top HPL?
 - » High Pressure Laminate (HPL) Top: 1/8" or 1/16"
- Is There C-Trim?
 - » C-Trim is black or brown trim around the panel.
 - » Most common with 1/8" HPL thickness.
- What Load Rating Is Required?
- Is There A Color Requirement?
 - » Standard HPL color is Gray Starlight.

Notes:



Triad • Complete Flooring Solutions For Every Facility

For Replacement Floor Grid Systems:

- What Is The Finished Floor Height (FFH)?
- Are There Any Obstructions; i.e. Columns Or Ramps?
- What Will Be Under The Floor?

Notes:

Existing Panel Photos Needed:

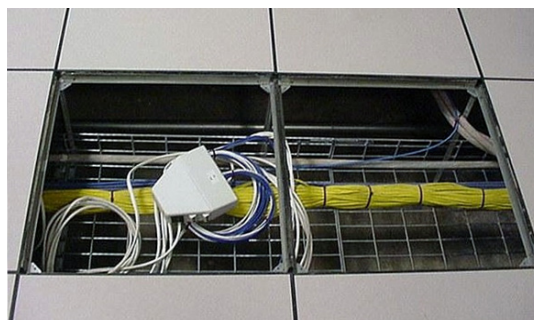
- Top Side
- Bottom Underside
- Side Of Panel; Include Any Labels, Stickers Or Stamps
- Raised Floor Grid Understructure.
 - » Do panels sit *on* stringer or *in* stringer?
 - » Remove two panels to show understructure.

Notes:

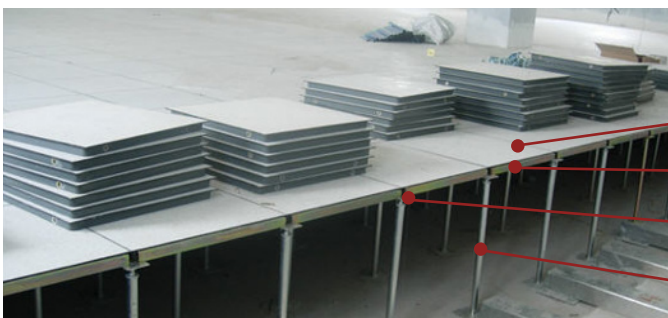
Send A Sketch Or Drawing If Available



High Pressure Laminate Thickness
1/8 inch (left) vs. 1/16 inch (right)



Laminate Install



Components of a Raised Floor

Cement Filled Panels

Stringers

Pedestals

Stanchions

